

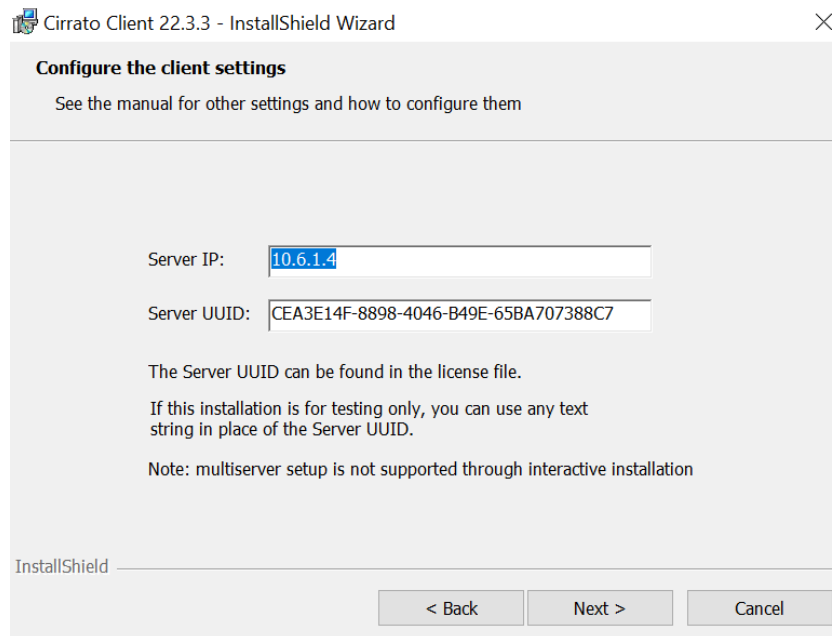
Cirrato for Windows Quick Guide

Note: *To install Cirrato, you need to have local administrator rights on your computer.*

Installing Cirrato

1. To install Cirrato, click on the “Cirrato Client x64 22.3.3EPI2.msi” file.
2. The Server IP configuration should be set to 10.6.1.4

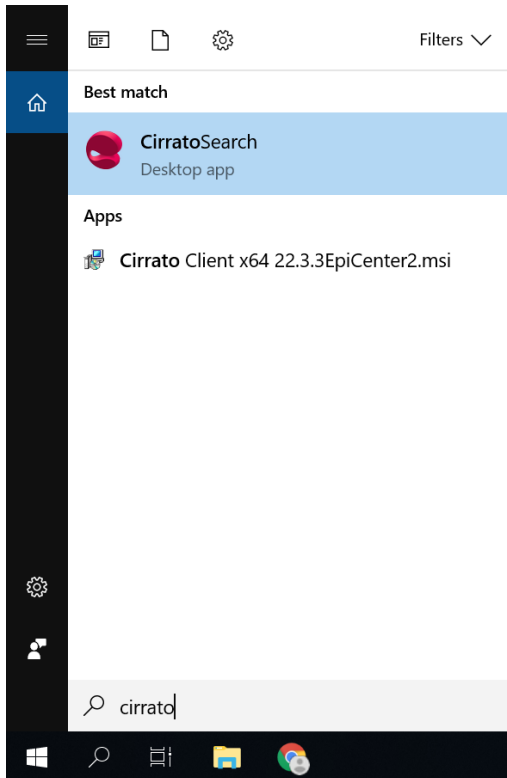
If it's not, type in said IP address. Click Next



3. Continue the next steps and click Install and authenticate yourself. Wait for the Installation to be Successful.
4. Run the program EpicenterPORTS.bat
5. Restart the computer!

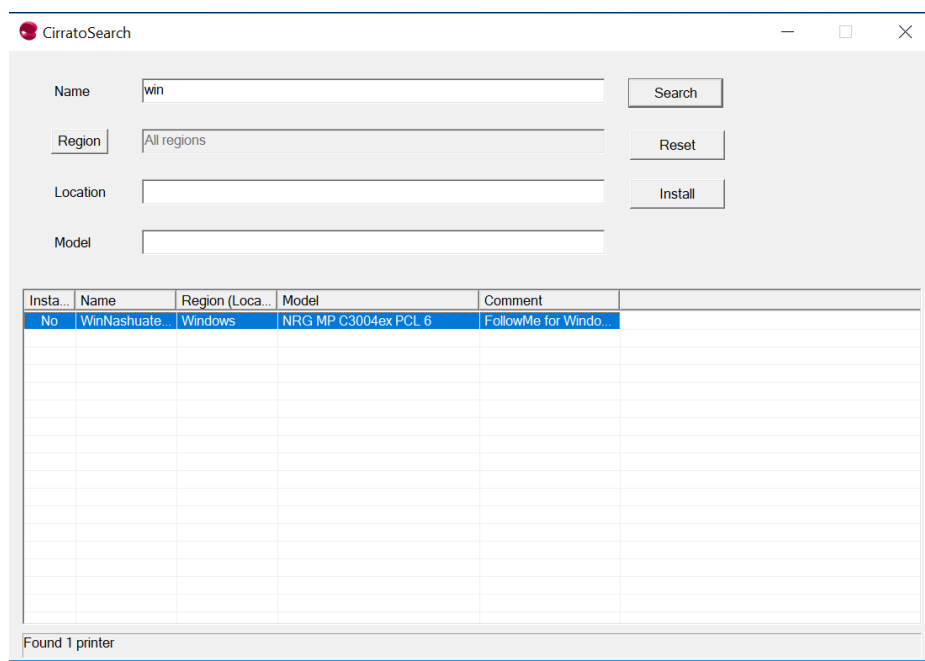
Using Cirrato

Open up the search bar on your PC and search for Cirrato, open the program called CirratoSearch. - see the picture below.



Installing Printers

1. Enter the name “Win” in the search field.
2. Install the printer that is shown.



Using the Printer!

When you use the printer for the first time you will have to authenticate yourself using your username which you can find on the the Epicenter webpage where you downloaded this PDF guide.

This will occur every time that you restart your computer.

Registering your card/tag to the Printers

Instructions on how to register your card-pass/tag will be printed from the printer that you're using when you put it against the reader. Just follow those instructions and you'll be all set.

Cirrato Self Service

There is a Self Service center in the Cirrato. Search for <http://10.6.1.4/Cirrato/LoginPage.aspx> in your browser URL. You'll need your credentials which you can find on the the Epicenter webpage where you downloaded this PDF guide. The Cirrato website will take you to an extra tool where you can monitor all of your current printing jobs and the history of your printing jobs.